

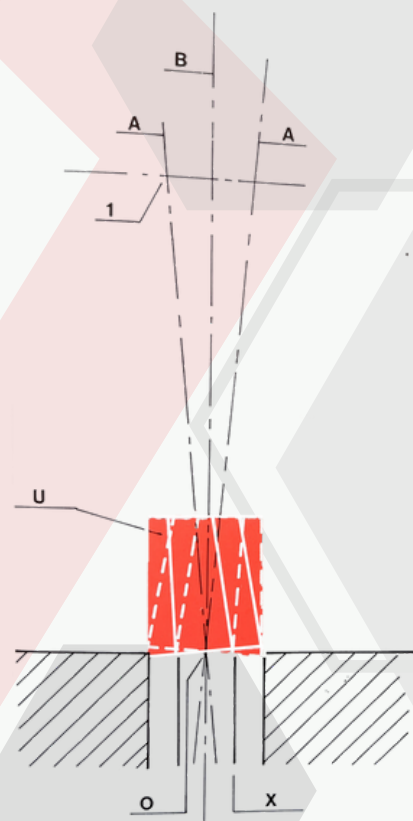
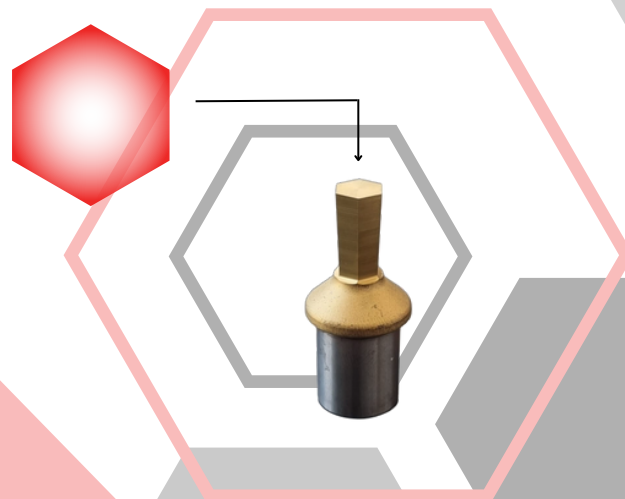


The functioning principle of the ROTARY BROACHING

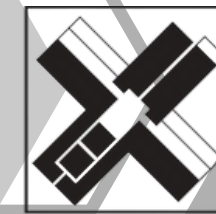
The removal of material to obtain the desired shape profile is achieved by means of a tool with the same frontal geometry.

With our device, the tool removes material **peripherally** and not, as with a press, over the entire profile at once. This greatly limits the forces involved. The progressive removal of material is made possible by the internal shape of our device, which makes the tool perform a '**circular pendulum**' movement.

In fact, the tool does NOT rotate with respect to the workpiece, but performs an oscillating motion which, added to the axial feed, allows the cutting wire to gradually remove material along the perimeter, acting as a continuous shear.



Axis OB = Machine axis
Axis OA = Tool axis
U = Tool



ROTARY BROACHING



The original and
revolutionary system
for broaching



poliangolar
broaching slotting tothing



Via Keplero, 24/A1
20019 Settimo Milanese (MI) - Italy



Tel.: +39 02 90090016



Email: info@poliangolar.com



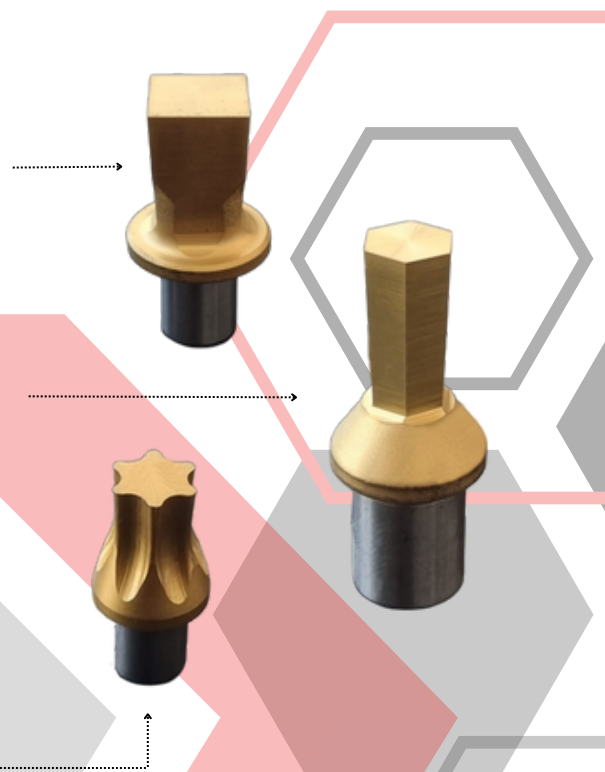
Web site: www.poliangolar.com



Made in Italy
Since 1965

WHAT IT IS

Rotary broaching, increasingly popular today, is due to the invention of Paolo Brema in the early 1960s (the patent for industrial invention dates back to 1965). From the beginning, the application mainly concerned the execution of **hexagonal and square slots**, such as hexagonal socket or socket spanners. Later, technological development also made **polygonal (regular and irregular) slots** and Torx keys possible.

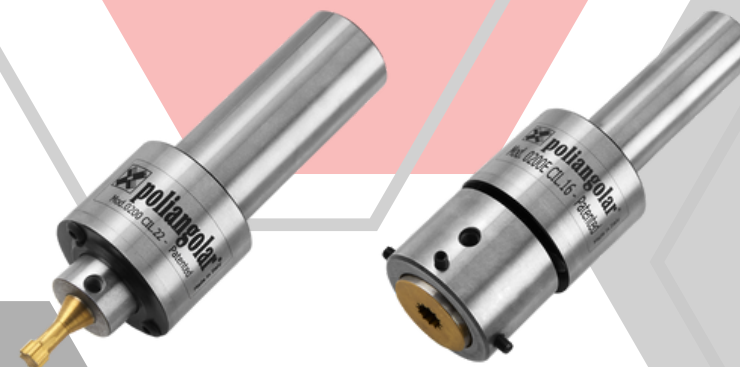


With our broaching system and tools, a wide variety of profiles can be produced using the most common **machine tools** in workshops, such as lathes, drills, milling cutters, both CNC and manual.



Poliangolar broaching tools can be used for machining a **very wide range of materials** such as steel, stainless steel, aluminium, titanium, bronze, other alloys and plastics.

WHAT IT IS FOR

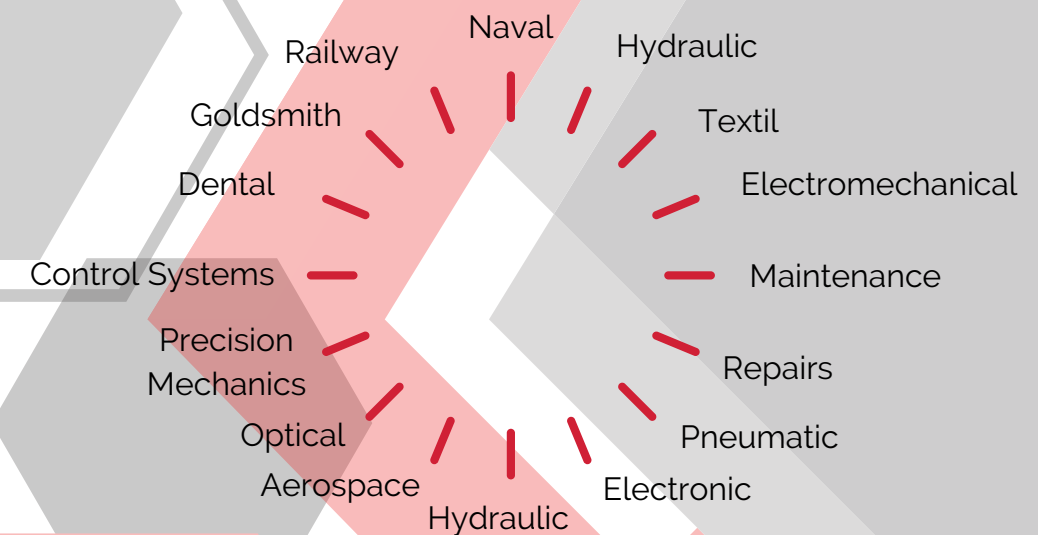


The Poliangolar is a rotary motion device suitable for machining **blind or through holes**, performing quick and accurate internal and external profiles of various shapes.

In addition to the standard profiles, such as hexagon, square and Torx, Poliangolar system is used to produce **special serrations, involutes, splines as per DIN5480, DIN5481, DIN5482, SAEJ500, ANSI B 92 1st, 1976 CUNA, etc...**

INDUSTRIES AREA

The Poliangolar is a device that has revolutionized the broaching system. Its large application in several **industrial sectors** make it the ideal solution for producing endless polygonal profiles.



FOR ALL MACHINE TOOLS

The range of Poliangolar tool-holders is available in **standard shanks** (Morse Taper, Cylindrical, Weldon, VDI, HSK, BT-MAS) or **special shanks** upon customer's request.

